

Section
5 **Altrusa's Structure**

A Worldwide Organization

The Local Club Organization

International and District Organization

Altrusa's Committee Structure

Leaders in Service

A WORLDWIDE ORGANIZATION

The name “Altrusa” is a derivation of altruism, which is defined as the principle or practice of unselfish concern for, or devotion to the welfare of others. Altrusa International is a worldwide service association of business and professional people united in personal development and fellowship. Working together in local clubs, members volunteer their energies and expertise in a wide variety of projects dedicated to community betterment.

Drawing upon the leadership abilities, talents, and altruistic motivations of its members, Altrusans seek to make their combined services more effective on the local, District, and International levels.

Local connection

The local club is the keystone of Altrusa International. It is the basic grass roots unit of the entire organization. Through the local club, Altrusa makes a difference on a community basis. Service to others in our hometown is an essential foundation of Altrusa.

International connection

Every member of Altrusa is a member of **Altrusa International, Inc.** All members receive services from the International Office and all members receive the *International Altrusan*. International provides many other printed materials, marketing tools, and leadership development materials. International hosts a biennial Convention, open to all Altrusans, to educate members and celebrate the achievements of Altrusa clubs around the world.

International also keeps in touch with other groups and organizations in the field of service important to the local clubs. It assigns delegates to major meetings of national and world organizations to learn of the latest developments in service to such fields as literacy, the handicapped, children, and the aged. This knowledge is incorporated in Altrusa’s planned programs.

District connection

An Altrusa club is strongly linked with a District which is made up of many Altrusa clubs within a specified geographic area. The District has a governor, board of directors, and committees whose purpose is to assist local clubs.

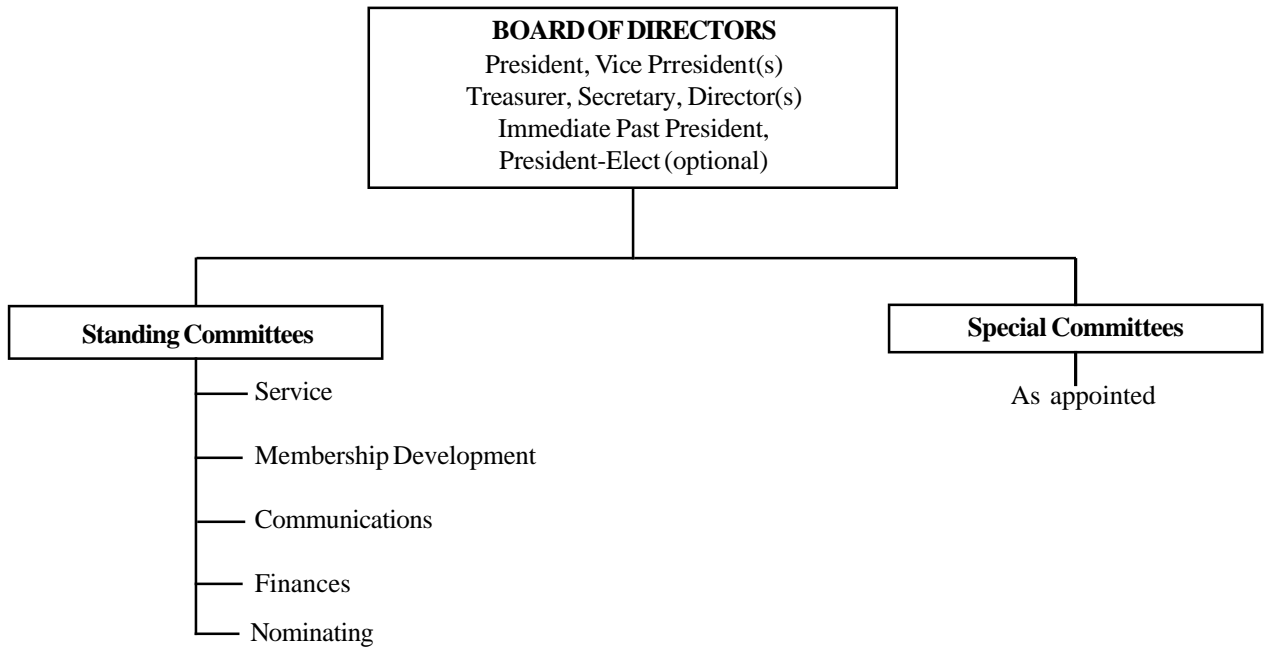
Service project ideas and techniques are communicated through *District Service Bulletins*, fall workshops, district conferences, and leadership seminars.

Lines of communication extend from the District to International, with its officers, board, and staff. Just as local club officers and chairmen work with District counterparts, those at the District level work with counterparts on the International level.

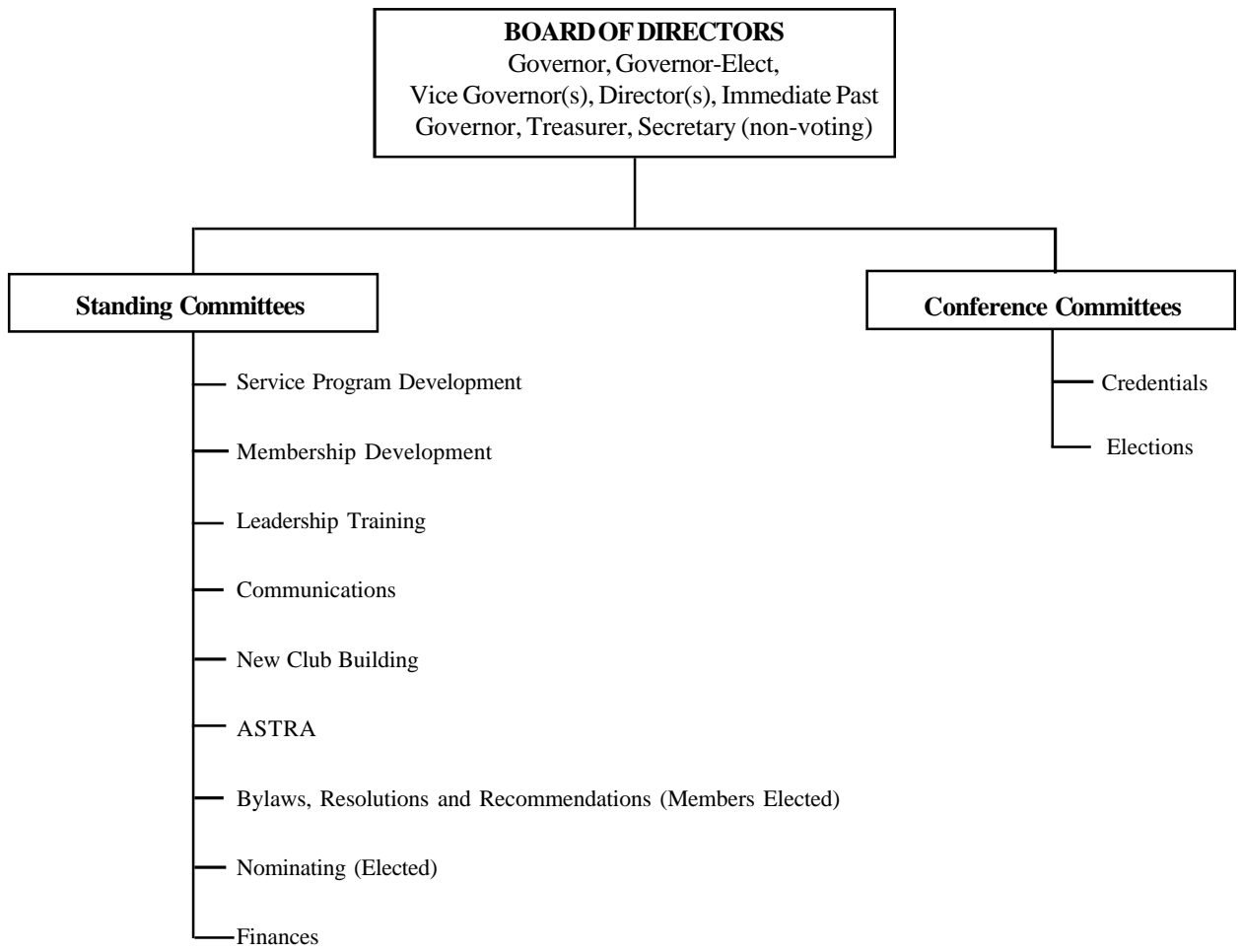
All of these opportunities add dimension to Altrusa membership beyond the local club level, and present ways to realize the members’ potential in service to others.

The charts on the next few pages show how the various parts of Altrusa work together to form the complex organization we are today.

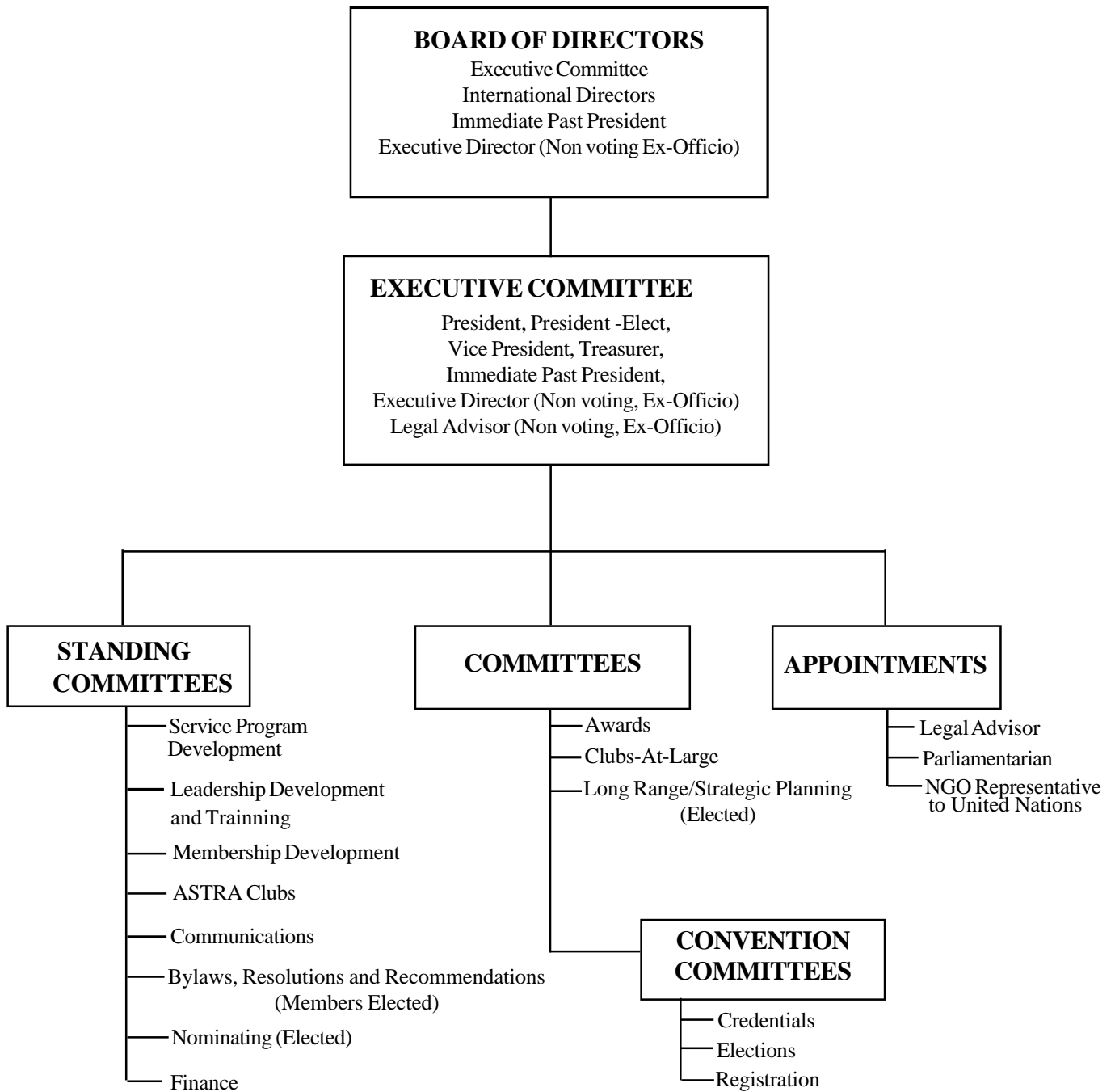
LOCAL CLUB ORGANIZATION



DISTRICT ORGANIZATION



INTERNATIONAL AND DISTRICT ORGANIZATION



ALTRUSA'S COMMITTEE STRUCTURE

Altrusa International, Inc., Committee Structure

